

2.1.1 Ukraine Port of Odessa

- [Port Overview](#)
- [Port Picture](#)
- [Description and Contacts of Key Companies](#)
 - [Odessa Port Daily Loading/Discharging Capacity](#)
 - [Port Handling Equipment](#)
 - [Port main terminals/facilities](#)
- [Discharge Rates and Terminal Handling Charges](#)
 - [Container Facilities](#)
- [Terminal Information](#)
 - [Multipurpose Terminal](#)
 - [Ship repairs](#)
 - [Cargo Handling](#)
 - [Main Storage Terminal](#)
 - [Port of Odessa Entry Procedures for Foreign Visitors](#)

Port Overview

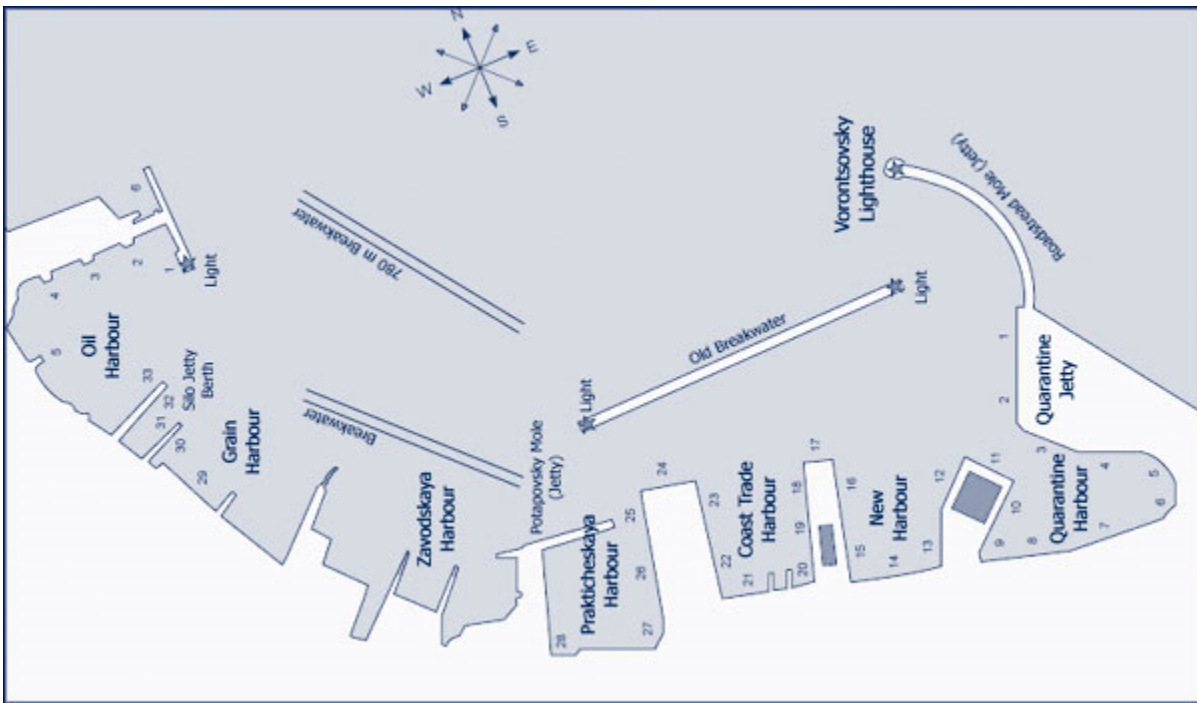
The port is situated on the NW shore of the Black Sea, in the SW part of Odessa Bay. It has year round navigation; ice-breaker assistance required for about 30 days in severe winters. Prevailing winds from N direction; those from the NNE and NNW being the strongest. Port protected on E side by various moles and on the N side by the jetties of the Oil Harbor. The port area consists of several harbors and comprises 54 berths with depths alongside ranging from 7 m to 11.5 m. Extent of a berthing line: over 9,000 m. Maximal vessel dimensions: length - to 330 m, width – to 40 m, draught - to 13.0 m. A wide variety of cargoes are handled. There are berths for passenger vessels on Voyenny Mole which are capable of accommodating six ocean-going liners simultaneously and are served by a modern and spacious passenger terminal. Facilities for handling LASH vessels at the reconstructed Karantinny Mole.

Port website: [Port of Odessa Website](#)

Key port information can also be found at: [Maritime Database Website](#)

Port Location and Contacts	
Country	Ukraine
Province or District	NW shore of the Black Sea SW part of Odessa Bay
Town or City (Closest location) with Distance (km)	Name: n/a km: n/a
Port's Complete Name	Port of Odessa
Latitude	46.48333
Longitude	30.75
Managing Company or Port Authority (If more than one operator, break down by area of operation)	Port of Odessa Authority
Management Contact Person	Chief of Administration: Sokolov Mikhail Yurievich (048) 729-35-55 (048) 729-35-00 (048) 722-13-13
Closest Airport and Frequent Airlines to / from International Destinations	Airport Name: Odessa International Airport located 11 km south-west of Odessa Sea Port. Airlines: Ukrainian International Airline, Air Moldova, Belavia, Turkish Airlines, Austrian Airlines, Ellinair, FlyDubai, Georgian Airways, LOT – “Polish Airlines”, Onur Air, UTair International destinations: Warsaw, Vienna, Dubai, Kishinev, Minsk, Istanbul, Tbilisi, Tel Aviv, Sharm-el-Sheikh Official web-site of Odessa International Airport

Port Picture



Description and Contacts of Key Companies

For information on Ukraine Port contact details, please see the following link:

[4.2.4 Ukraine Port and Waterways Company Contact List](#)

Port of Odessa Authority, Vakulenchuka Square 1, Odessa 65004, Tel: (0482) 226631, Telex: 412677

BSSC SU, Officials: Chief of Administration: M.Y. Sokolov. . Vice Chief Administration: I.S. Morylev. . Chief Traffic Controller: D.V. Karpov. Harbor master: A.A. Antonov.

Port call sign UDE. Odessa Radio: 500, 454 & 2182 kHz (calling); 500, 447 & 2182 kHz(working).

Odessa Radio 1, Port Control: VHF Channel 16,156.8 MHz Odessa Radio 17

Harbor Master: VHF Channel 9, 156.45 MHz Odessa Radio 8, Movements control: VHF Channel 67, 156.375 MHz

Odessa Port Daily Loading/Discharging Capacity

Cargo	Capacity (t)
Liquid	
Crude oil	10000
Black petroleum products	13300
Diesel fuel	3300
Bulk	
Grain	2000
Sugar	2000
Ground oil-cake/bran	900
Fertilizers in Bulk	3000 / 5000
Ore	1500 / 2000

Coal	1500 / 2000
General	
Equipment in boxes	450
General cargo	450
Metal constructions	700
Cotton in bales	500
Pipes of large diameter	800
Paper, cardboard, cellulose	800 / 1000
Timber packaged	450-500
Containers (units)	900

Port Handling Equipment

Numerous electric portal cranes of up to 45t cap; floating cranes up to 100t cap and various other cargoes handling equipment.

Largest Vessel: 116283 dwt, 266.5 m loa

Port main terminals/facilities

Terminal	Terminal Details	Pier No	Berth Details
"Olimpex coupe terminal"	fertilizers, scrap & steel cargoes	03	berth line=230m/draft=11,70m
		04	berth line=270m/draft=11,50m
"Metalsukraine terminal"	steels, grains & general cargoes	07	berth line=350m/draft=11,50m
		08	berth line=280m/draft=09,50m
"Novolog terminal"	steels & general cargoes	10	berth line=200m/draft=11,50m
		11	berth line=180m/draft=11,50m
		12	berth line=200m/draft=11,60m
		13	berth line=200m/draft=11,70m
"Interterminal"	steels,grains, scrap & general cargoes	12	berth line=270m/draft=09,90m
"Passenger terminal"	cruise & ferry ships only	15,16,17,18,19	n/a
"Petrex terminal"	steels,grains, baged & general cargoe	21	berth line=150m/draft=08,80m
		22	berth line=150m/draft=09,00m
		23	berth line=240m/draft=09,20m
"IronImpex terminal"	steels,scral, grains & general cargoes	25	berth line=200m/draft=10,00m
		26	berth line=200m/draft=10,00m
"Brooklyn-Kyev terminal"	operates with steels, grains,sugar & general cargoes	Silo pier No.30	berth line=200m/draft=09,80m
		Silo pier No.31	berth line=200m/draft=09,80m
		32	berth line=170m/draft=11,20m (max ship LOA=200m)
		33	berth line=170m/draft=11,50m (max ship LOA=200m)

Discharge Rates and Terminal Handling Charges

For information on port rates and charges, please see the following link: <http://www.port.odessa.ua/en/about-port/port-charges-and-tariffs>

Container Facilities

Container and Ro/Ro Facilities:

- Container terminal equipped with highly mechanised and powerful container handling equipment.
- Ro/Ro vessels can be accommodated at the port. Ore and Bulk Cargo Facilities:
- Grain terminal at Berth No 7, two pneumatic unloaders each operating up to 300t/h.
- Sugar terminal, highly mechanised facility where sugar can be transferred direct from vessels to railway wagons.
- Other bulk cargoes handled include bauxite and mineral building materials.

Terminal Information

Multipurpose Terminal

- The Oil Harbour is situated at N part of the port and is protected by a mole.
- There are five oil berth and the channel to the berths is 1600m long, 125m wide and has a least depth of 13.6m.
- A new tanker berth has come into operation for large tankers and reports state that the channel has been dragged to accommodate the larger vessels at the terminal.

Ship repairs

Odessa Shiprepair Yard, Tel: (0482) 238262, Fax:(0482)235233, Telex: 232267. Floating docks with lifting cap of 6000t, 15000t and 27000t to accommodate vessels up to 200 m loa and 300m beam.
Port hospital and medical centre.

Cargo Handling

The companies of non-state pattern of ownership rendering cargo handling services:

- Company branch "HPC-UKRAINE" of «HPC Hamburg Consalting GmbH Port»;
- Metalsukraine Corp.Ltd.» LLC;
- "Novolog" LLC;
- "Novotech-Terminal" LLC;
- "Brooklyn-Kiev" LLC;
- "UNSC" LLC;
- "Olympex Coupe International" LLC;
- Subsidiery Enterprise «Prista-Oil Ukraine»;
- Odessa Port Industrial-Transshipment Complex» LLC;
- Brooklyn-Kiev Port» LLC;
- Private Joint Stock Company with Foreign Investments "Sintez-Oil".

Service of the port's facilities:

- embarkation-disembarkation at the passenger terminal;
- rendering of services to freight and passenger vessels with own fleet;
- shipyard services;
- supplying with water at berths and at anchorage;
- stuffing and unstuffing of containers;
- taking off sewage, garbage etc.;
- granting of the passenger terminal exhibition hall for exhibitions, concerts and other events;

Main Storage Terminal

Single and multi-floor warehouses and concrete open storage areas are available. There is also a cold store.

Port of Odessa Entry Procedures for Foreign Visitors

Foreign delegations, groups and individuals which are going to enter the territory of the port of Odessa and have a meeting with the Port Authority need to submit the following documents:

Official letter addressed to the General Manager of Odessa Seaport Authority sent to e-mail welcome@port.odessa.ua, monitor@port.odessa.ua or fax 00 38 048 729 36 01, no later than 14 (fourteen) working days before the planned visit.

The letter should contain the following data on each member of the delegation: first name, family name, date of birth, citizenship, sex, name of the company, position in the company.

Besides, the letter should cover:

- Date and time of the visit
- Purpose of the visit
- Issues planned to discuss
- Facilities and terminals planned to visit

Copies of passports (ID cards) of each member of the delegation should be provided as well.

In case of absence of the above documents and/or in case of violation of the deadline, the visit will not take place.

Should you have any additional questions, please contact:

Tel. +38 048 729 49 00

Fax +38 048 729 36 01

E-mail: monitor@port.odessa.ua

Port Security

Port name: Odessa, Ukraine

Status: Port Open

UN Locator code: UAODS

N 46°2 9' 27.6 E 30°4 5' 30.3

Port Security Level: 1 (one)

In the port a system of maritime security measures has been implemented under the requirements of Chapter XI-2 "Special measures to enhance maritime security" of Safety of life at sea (SOLAS 74) and International ship and port facility security code (ISPS Code). System of maritime security measures includes duly certified systems of the conventional port facilities as follows:

	Port facilities
UAODS-0001	Brooklin-Kiev
UAODS-0002	Metalsukraine
UAODS-0003	Novolog
UAODS-0004	Olimpex-Coupe
UAODS-0005	Novotech-terminal
UAODS-0006	Ukrainian National Stevedore company
UAODS-0007	Container terminal
UAODS-0008	Oil terminal
UAODS-0009	Odesa port cold storage
UAODS-0010	Passenger terminal
UAODS-0011	Specialized terminal - port auxiliary fleet
UAODS-0050	Brooklyn-Kiev-Port
UAODS-0051	Prista Oil-Ukraine
UAODS-0052	Ship repair terminal
UAODS-0057	Porto-SAN

For more information, please visit International Maritime Organization - Global Integrated Shipping Information System (<http://gisis.imo.org/Public/Default.aspx>) section Maritime Security.

Port system of maritime security measures are provided by Maritime Security Service. Maritime Security Service consist of duly authorized officers who are part of Port Facility Security Group and Seaport Security Detachment which provides the whole range of measures to ensure the checkpoint and keeping security regimes.