

2.2.2 Republic of the Congo: Antonio Agostinho Neto International Airport, Pointe-Noire

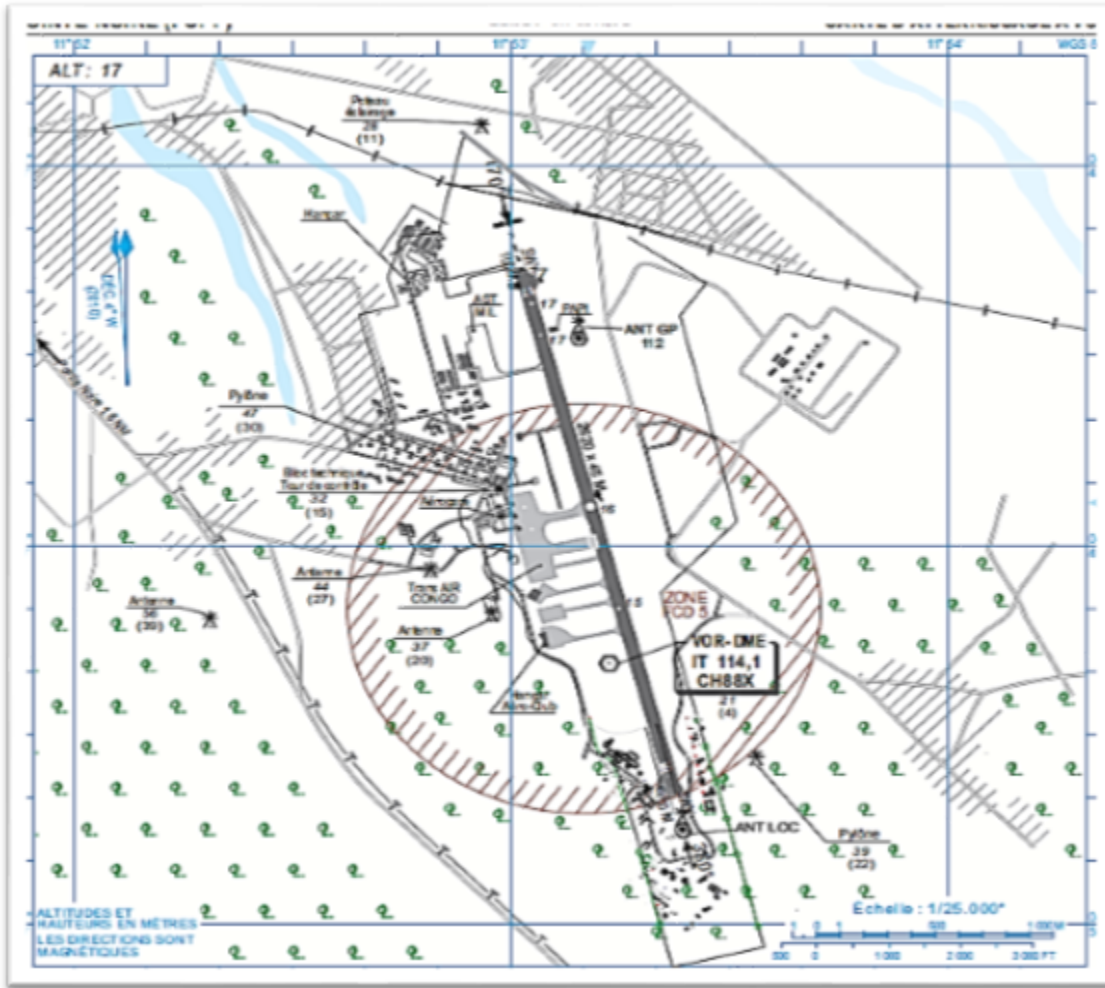
- [Airport Overview](#)
- [Airport Picture](#)
- [Description and Contacts of Key Companies](#)
- [Passenger and Cargo Performance Indicator](#)
- [Helicopter Pad\(s\)](#)
- [Airport Infrastructure Details](#)
- [Airport Operating Details](#)
- [Customs Guidance](#)
- [Storage Facilities](#)
- [Airfield Costs](#)
 - [Navigation Charges](#)
 - [Fuel Service Charges](#)
 - [Cargo Terminal Charges](#)
 - [Air-Bridge Charges](#)
- [Security](#)

Airport Overview

Antonio Agostinho Neto International Airport (IATA: PNR, ICAO: FCPP), is an airport located in Pointe-Noire, Republic of the Congo. It is one of two international airports in the country, the other being Brazzaville Maya-Maya Airport. The airport was inaugurated in 1934; a new passenger terminal opened in 2006. Another terminal is presently under construction. In 2015, the airport served 780,412 passengers and international flight are available with several air companies including Air France, Cameroon Airlines, Ethiopian Airlines, Kenya Airways, South African Airlines, ASKY, Air Cote d'Ivoire and Royal Air Maroc, TAAG as well as other cargo airlines like Ethiopians air lines. Cargo flights serve Maya-Maya airport to deliver fresh food. For cargo handling the operation has been commissioned to Congo Handling, which is a subsidiary of the French based Group Europe Handling. Different shipping companies have office at the airport. A customs office is also present.

Airport Location and Contact	
Country	Republic of Congo
Province or District	Kouilou
Nearest Town or City with Distance from Airport	Pointe-Noire
Airport's Complete Name	Agostinho Neto
Latitude	-4.81472222
Longitude	11.88638889
Elevation (ft and m)	17 m
IATA Code	PNR
ICAO Code	FCPP
Managing Company or Airport Authority	AERCO
Management Contact Person	contact@aerco-cg.com
Open From (hours)	00:00
Open To (hours)	24:00

Airport Picture



Description and Contacts of Key Companies

For information on the Airport Company Contact List', please see the followings link: [4.5 Republic of the Congo Airport Companies Contact List](#)

For information on the government contact list', please see the followings link: [4.1 Republic of the Congo Government Contact List](#)

Information on some aviation service providers can be found at: <http://www.azfreight.com>

For more information on companies operating within the Maya-Maya airport can be found at: <http://www.pointenoire-airport.com/assistance-companies/> . These include Assistance Companies (SNPC, SERVAIR Congo, Congo Handling), car rental companies, baggage services, and the international business lounge.

Passenger and Cargo Performance Indicator

In 2015, the airport served 780,412 passengers and international flight are available with several air companies including Air France, Cameroon Airlines, Ethiopian Airlines, Kenya Airways, South African Airlines, ASKY, Air Cote d'Ivoire and Royal Air Maroc, TAAG as well as other cargo airlines like Ethiopians airlines.

Performance for 2015			
	Per Year	Per Month	Per Day
Total Aircraft Movements	25,566	N/A	N/A
Total Passengers	780,412	N/A	N/A
Total Capacity of the Airport (MT)	N/A	N/A	N/A
Current Activity of the Airport (MT)	99,672	N/A	N/A

Current use by Humanitarian Flights (UNHAS)	N/A	N/A	N/A
---------------------------------------------	-----	-----	-----

Runways

Runway #1	
Runway Dimensions	2,600 m x 45 m
Orientation	17/35
Surface	Asphalt

Helicopter Pad(s)

There are no proper helicopter pads at Pointe-Noire International Airport. Any type of helicopter can land on the runway.

Airport Infrastructure Details

A new terminal has been constructed and inaugurated in 2016. The level of maintenance of equipment is good.

Here is the Airport website for further information: <http://www.pointenoire-airport.com/>

Customs	Yes	JET A-1 fuel	Yes
Immigration	Yes	AVGAS 100	No
Terminal Building	Yes	Single Point Refuelling	Yes
Passenger Terminal	Yes	Air Starter Units	Yes
Cargo terminal	Yes	Ground Power (mobile)	Yes
Pax Transport to Airfield	No	Ground Handling Services	Yes
Control Tower	Yes	Latrine Servicing	Yes
Weather Facilities	Yes	Fire Fighting Category (ICAO)	Yes
Catering Services	Yes	De-icing Equipment	No
Base Operating Room	No	Parking Ramp Lighting	Yes
Airport Radar	Yes	Approach & Runway Lights	Yes
NDB	Yes	VOR	Yes
ILS	Yes		

Airport Operating Details

The regulation of civil aviation in the Republic of Congo falls under the Ministry of Transport and the Civil Aviation; ANAC is the government agency that manages and administers the airports. For airspace security and navigation of aircrafts the responsibility has been commissioned to ASECNA. It is a regional company that manages the aviation security of several African airports including Brazzaville and Pointe-Noire. Among its tasks is to assure:

1. Control of the airspace circulation
2. Guidance of airplanes
3. Transmission of technical and traffic messages
4. Information about flights arrivals and departures
5. Meteorological information
6. Guidance of flights inside the airport and terminal approaches
7. Fire emergency services

Operating Details	
Maximum Sized Aircraft that can be Offloaded on Bulk Cargo	MD-11 or IL-76

Maximum Sized Aircraft that can be Offloaded on Pallet	MD-11 or IL-76		
Total Aircraft Parking Area (m ²)	10,000		
Storage Area (m ³ and MT)	No storage		
Handling Equipment			
Elevators / Hi Loaders	Yes	Max Capacity (MT)	
		Max Height (m)	
Loading Ramps	Yes		
Other Comments	Hi Loaders can reach the upper deck of a B747		

Customs Guidance

For more information on customs in Republic of Congo please see the following link: [1.3 Republic of the Congo Customs Information](#).

Storage Facilities

For cargo handling the operation has been commissioned to Congo Handling, which is a subsidiary of the French based Group Europe Handling. The airport is no proper storage capacity in the airport perimeter.

Airfield Costs

For more information on AERCO Charges and Fees, please follow the following link: <http://www.pointenoire-airport.com/charges-and-fees/>

Airfield Charges (XAF)					
Aircraft Weights – MTOW (mt) (Charge changes with each tonner – charge calculated per aircraft type)	Aircraft type	Landing (international)	Night Landing (ASECNA)	Night Take-off (ASECNA)	Parking (2 hours free)
0 – 1	C172	2,708	83,746	83,746	MTOW x XAF 120 /hour
1 – 2	C205	2,708	83,746	83,746	MTOW x XAF 120 /hour
2 – 5	BE200	5,425	83,746	83,746	MTOW x XAF 120 /hour
5 – 13	DC-3	14,105	83,746	83,746	MTOW x XAF 120 /hour
13 – 20	Dash-7	21,700	83,746	83,746	MTOW x XAF 120 /hour
20 – 28	Dash-8	33,665	83,746	83,746	MTOW x XAF 120 /hour
28 – 61	An-12	105,605	83,746	83,746	MTOW x XAF 120 /hour
61 – 100	B757	212,550	106,079	106,079	MTOW x XAF 120 /hour
100 – 136	B767	322,602	106,079	106,079	MTOW x XAF 120 /hour
136 – 190	IL-76	480,000	106,079	106,079	MTOW x XAF 120 /hour
190 – 405	An-124	1,095,975	106,079	106,079	MTOW x XAF 120 /hour

- Note #1: Night landing hours are between 18:00 – 06:00 hours when lights are being used.
- Night landing fee is XAF 83,746 for aircraft up to and equal to 75 MT and XAF 106,079 for aircrafts above 75 MT
- Note #2: Parking charges are for each hour or part thereof (first 2 hours free)
- Note #3: All of these charges are administered by ANAC & ANSECA and are the same for all airports in Congo
- Note #4: ANAC will charge a freight fee on all cargo of XAF 40/kg

Costs – Aircraft Servicing Charges (Congo Handling SA)	
Service	Ad Hoc / XAF
Chocks per operation	Included in handling charge
Stairs per unit per hour	Included in handling charge
GPU per half-hour (30 min)	315,000 (2 – 3 hours included in handling charge)
ASU per operation	472,500
Loader per hour	Included in handling charge

Navigation Charges

Night landing hours are between 18:00 – 6,00 hours. Parking charges are for each hours or part there of; first 2 hours free. These charges are administered by the ANAC &ASECNA and are the same for all airports in Republic of Congo from 26 Mt and upwards each weight class fee comes on top of the former one. Over flight fees depends on route and can be very fluctuant.

Charges	Aircraft Weight - MTOW (kg)		
	0 - 7,000	7,001 - 136,000	136,001 and over
Navigation (per journey) (XAF)	2,087	5,877	5,510
Landing (XAF)	14,105	322,602	1,095,975
Night Landing (XAF)	83,746	106,079	106,079
Night Take-Off (XAF)	83,746	106,079	106,079
Parking Handling Charges (XAF)	MTOW x XAF 120/hour	MTOW x XAF 120/hour	MTOW x XAF 120/hour

Fuel Service Charges

Aircrafts are served by tank trucks and there is also a single point for refuelling. The price for Jet A-1 is presently XAF 600/litre. ANAC is also charging a fuel service fee of XAF 3.40/litre.

	Price per Litre (XAF)
Jet A-1	600
Avgas	N/A

Cargo Terminal Charges

There is no tariff for handling charges which must be negotiated with the cargo handling company either on a case by case base or in contractual form. Price level will depend on frequency of flights. Some standard examples are given below.

Aircraft Handling Schedule		
Aircraft Weight – MTOW (kg)	Aircraft Model	Charges (XAF)
0 – 1,500	C172	Charges quoted on demand
1,501 – 2,500	C205	Charges quoted on demand
2,501 – 5,000	C208	Charges quoted on demand
5,001 – 10,000	DC-3	Charges quoted on demand
10,001 – 20,000	Dash-7	Charges quoted on demand
20,001 – 40,000	Dash-8	525,000 + 50% night (22:00 – 06:00) + 25% Sunday

40,001 – 80,000	An-12	840,000 + 50% night (22:00 – 06:00) + 25% Sunday
80,001 – 120,000	B757	Charges quoted on demand
120,001 – 180,000	B767	2,310,000 + 50% night (22:00 – 06:00) + 25% Sunday
180,001 – 300,000	IL-76 (190 m)	1,575,000 + 50% night (22:00 – 06:00) + 25% Sunday
300,001 – and over	An-124	3,150,000 + 50% night (22:00 – 06:00) + 25% Sunday

- Toilet Service per Aircraft : XAF 215,000
- Push-back per operation: XAF 157,000 – 367,000 (4 categories)
- Trailer/dolly per operation: included in handling charge

Import Charges	
Type of Charge	Rate XAF per kg
Handling Charge	115 + 3% Tax
Break Bulk Fee	Included in handling charge
Diplomatic Mail	N/A
Strong Room – per consignment	N/A
Cold Storage Fee	N/A
Delivery Outside Normal Working Hours	+ 50% (22:00 - - :00) + 25% Sunday
Preparation of substitute AOA – Invoice – Receipt	N/A
Storage per Day	3 days free; storage charge depends on cargo value
Export	
Handling Charges – Un-palletized Cargo	115 + 3% Tax
International Air Waybill	N/A
Local Air Waybill	N/A
Air Way Bill Amendment - Cancellation	N/A
Air Way Bill Documentation	N/A
Diplomatic Mail	N/A
Storage Charges per Day	Storage charge depends on value of cargo

Air-Bridge Charges

N/A

Security

Security at Terminal buildings and runway seems good.